



CSE: ORNG | FSE: A1S0

*Well-positioned and participating in one of the most active  
oil exploration regions, Orange Basin, offshore Namibia*

Oregon Energy Corp.  
Dec 9, 2025



# Disclaimer and Forward-Looking Statements

*This presentation ("Presentation") is being issued by Oregon Energy Corporation (the "Company" or "Oregon"), for information purposes only. The content of this Presentation has not been approved by any stock exchange in Canada nor any regulation services provider or by any securities regulatory authority. Reliance on this Presentation for the purpose of engaging in any investment activity may expose an individual to a significant risk of losing all of the property or other assets invested.*

*This Presentation is not an admission document, prospectus or an advertisement and is being provided for information purposes only and does not constitute or form part of, and should not be construed as, an offer or invitation to sell or any solicitation of any offer to purchase or subscribe for any common shares of the Company in Canada, the United States or any other jurisdiction. Neither this Presentation, nor any part of it nor anything contained or referred to in it, nor the fact of its distribution, should form the basis of or be relied on in connection with or act as an inducement in relation to a decision to purchase or subscribe for or enter into any contract or make any other commitment whatsoever in relation to any securities of the Company. No representation or warranty, express or implied, is given by or on behalf of the Company, its directors, officers and advisors or any other person as to the accuracy, sufficiency or completeness of the information or opinions contained in this Presentation and no liability whatsoever is accepted by the Company, its directors, officers or advisors or any other person for any loss howsoever arising, directly or indirectly, from any use of such information or opinions or otherwise arising in connection therewith.*

*Certain statements contained in this Presentation constitute "forward-looking statements" as such term is used in applicable Canadian and US securities laws. These statements relate to analyses and other information that are based upon forecasts of future results, estimates of amounts not yet determinable and assumptions of management. In particular, statements concerning the timing of drilling upcoming wells, the future success of such wells, the ability of the Company to successfully complete and commercially produce, transport and sell oil from such wells, the maintenance of current production levels from existing wells and future wells, future crude oil pricing levels, the ability of the Company to fund future drilling operations, pipeline interruptions on existing or future pipelines, timing of completion of production facilities and pipeline, estimates of pipeline losses and events or projections referenced or implied herein should be viewed as forward-looking statements. All reserves estimates and estimates of future net revenue do not represent fair market value. The term "operating netback" does not have any standardized meaning as prescribed by Canadian Generally Accepted Accounting Principles ("GAAP"), and therefore may not be comparable to similar measures presented by other companies where similar terminology is used. Operating netback is not a measurement based on GAAP in Canada, but is a financial term commonly used in the oil and gas industry. Operating netback is equal to petroleum and natural gas sales less blending expense, royalties, production and operating expense, and transportation expense divided by barrels of oil equivalent sales volume for the applicable sales period. The Company's determination of operating netback may not be comparable with the calculation of similar measures for other entities. The Company believes that this measure assists in characterizing the ability to generate cash margin on a unit of production basis and is a key measure used to evaluate the Company's operating performance. Any statements that express or involve discussions with respect to predictions, expectations, beliefs, plans, projections, objectives, assumptions or future events or are not statements of historical fact should be viewed as "forward-looking statements". Such forward looking statements involve known and unknown risks, uncertainties and other factors which may cause the actual results, performance or achievements of the Company to be materially different from any future results, performance or achievements expressed or implied by such forward-looking statements. Such risks and other factors include, among others, the costs and timing of exploration and production development, availability of capital to fund exploration and production development; political, social and other risks inherent in carrying on business in a foreign jurisdiction, the effects of a recessionary economy and such other business risks as discussed herein and other publicly filed disclosure documents.*

*Although the Company has attempted to identify important factors that could cause actual actions, events or results to differ materially from those described in forward-looking statements, there may be other factors that cause actions, events or results not to be as anticipated, estimated or intended. Investors are cautioned that such forward-looking statements involve risks and uncertainties. There can be no assurance that such statements will prove to be accurate as actual results and future events could vary or differ materially from those anticipated in such statements.*

*Accordingly, readers should not place undue reliance on forward-looking statements contained in this Presentation. The forward-looking statements contained herein are expressly qualified by this cautionary statement. Forward-looking statements are made based on management's beliefs, estimates and opinions on the date hereof and the Company undertakes no obligation to update any forward-looking statements contained herein whether as a result of new information, future events or otherwise, except as required by applicable law.*



# Namibia – A Major Emerging Oil Frontier

Namibia has rapidly become one of the *world's most exciting oil exploration regions*, capturing global attention with substantial recent offshore discoveries. In just the past few years, Namibia's offshore basins—particularly the *Orange Basin*—have emerged as some of the most promising and under-explored petroleum systems on the planet, closely mirroring the transformational oil discoveries recently seen in Guyana.

Total offshore reserves in Namibia are currently estimated to be approximately *20 billion barrels of oil*, reflecting the tremendous exploration success achieved by some of the world's leading oil majors.

## Major recent discoveries:

### Rhino Resources - Capricornus 1-X

~Light Oil Discovery, Flow rate 11,000 bbl/d

### TotalEnergies Venus-1X

~5.1 billion barrels

(Africa's largest-ever Sub-Saharan find)

### Shell Graff-1X:

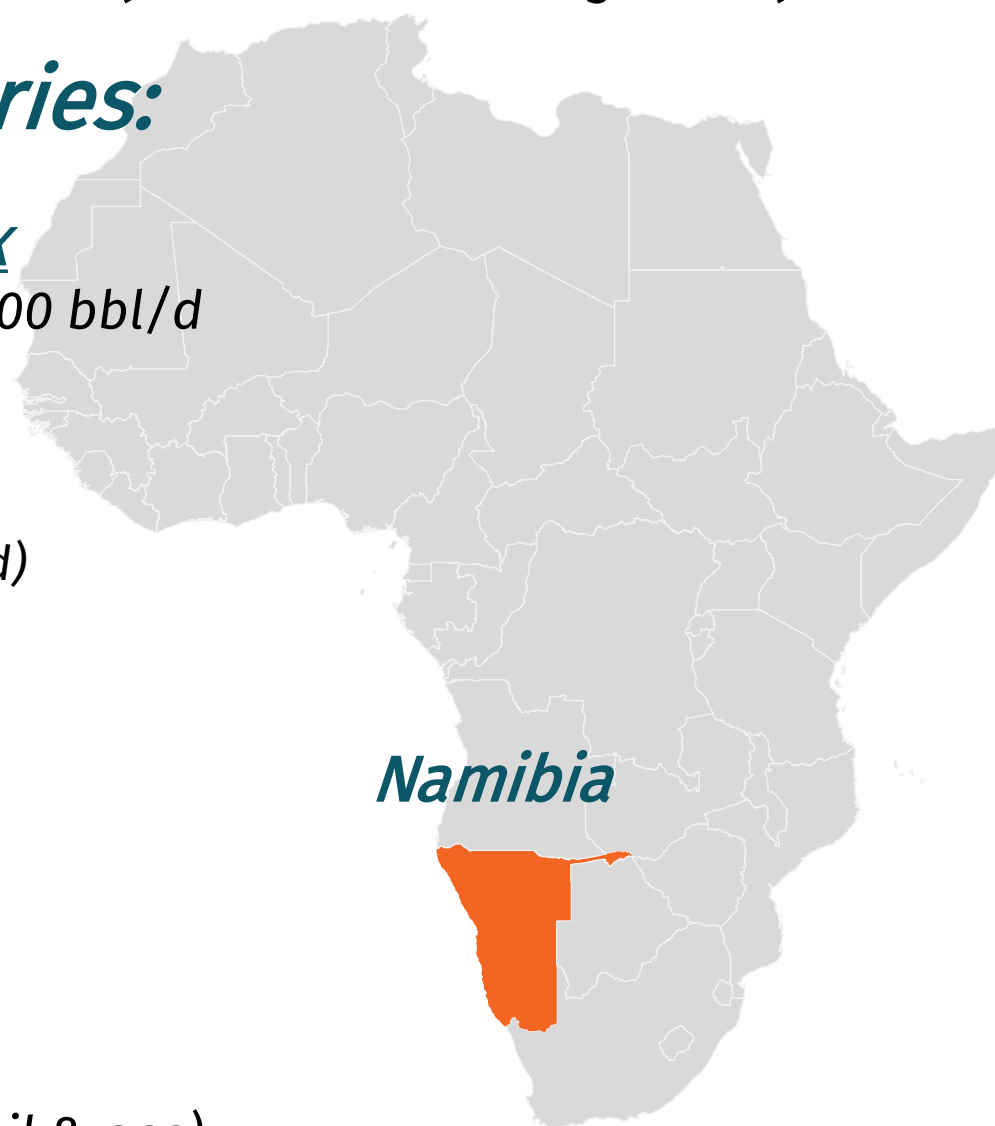
~2.4 billion barrels

### Shell Jonker-1X

~2.5 billion barrels

### Galp Mopane Field

~10 billion barrels oil equivalent (oil & gas)



*"We are offering a sustainable operating environment, ensuring all discoveries are in a race to first oil while making a lasting impact on the local economy."*

- Maggy Shino  
Namibia's Petroleum Commissioner



# Why Oregon is Your Entry Point Into Namibia's Oil Boom

Namibia's offshore Orange Basin is experiencing an unprecedented surge in exploration activity, rapidly evolving into a globally significant oil frontier. For investors, Oregon represents an exceptional early-stage opportunity in a region poised for substantial growth.

## *Namibia Is Now a Key Oil Exploration Frontier:*

### ***Fair and Stable Government***

- Stable political environment and low corruption
- Pro-business government eager to attract foreign investment, especially in energy
- Strategic geographic location with access to Atlantic shipping routes
- Experience with deepwater FPSO development in neighboring Angola and Nigeria supports infrastructure readiness
- Government actively supports fast-tracking oil and gas developments

### ***Strong Fiscal Terms***

- Namibia operates a tax/royalty system
- 35% petroleum income tax rate
- 5% royalty rate
- The state oil company, NAMCOR, holds a 10-15% stake in all projects

### ***Massive Offshore Potential***

- Major companies like TotalEnergies, Shell, Galp and Rhino Resources/Azule Energy have reported significant finds in the Orange Basin
- Three major discoveries alone (Graff, Venus, Mopane) rival Guyana's 30 discoveries in scale
- Namibia aims to be among the top 10 global oil producers by 2035

### ***2025 and Near-Term Activity***

- Deepwater Orange Basin is one of the most active exploration frontiers globally
- Active drillers: Galp, TotalEnergies, Rhino Resources/Azule Energy, BW Energy
- QatarEnergy, Chevron, ExxonMobil, and Shell all increasing positions
- Final Investment Decisions (FIDs) expected on at least two major projects within two years





# About Orogen

*Orogen Energy Corp. (CSE: ORNG / FSE: A1S0) is a Canadian-based publicly traded Investment company listed on the Canadian securities exchange, and Frankfurt Stock Exchange strategically focused on high-potential offshore oil assets in Namibia's prolific Orange Basin—the most active new oil frontier in the world today.*

## Strategic Position in Namibia:

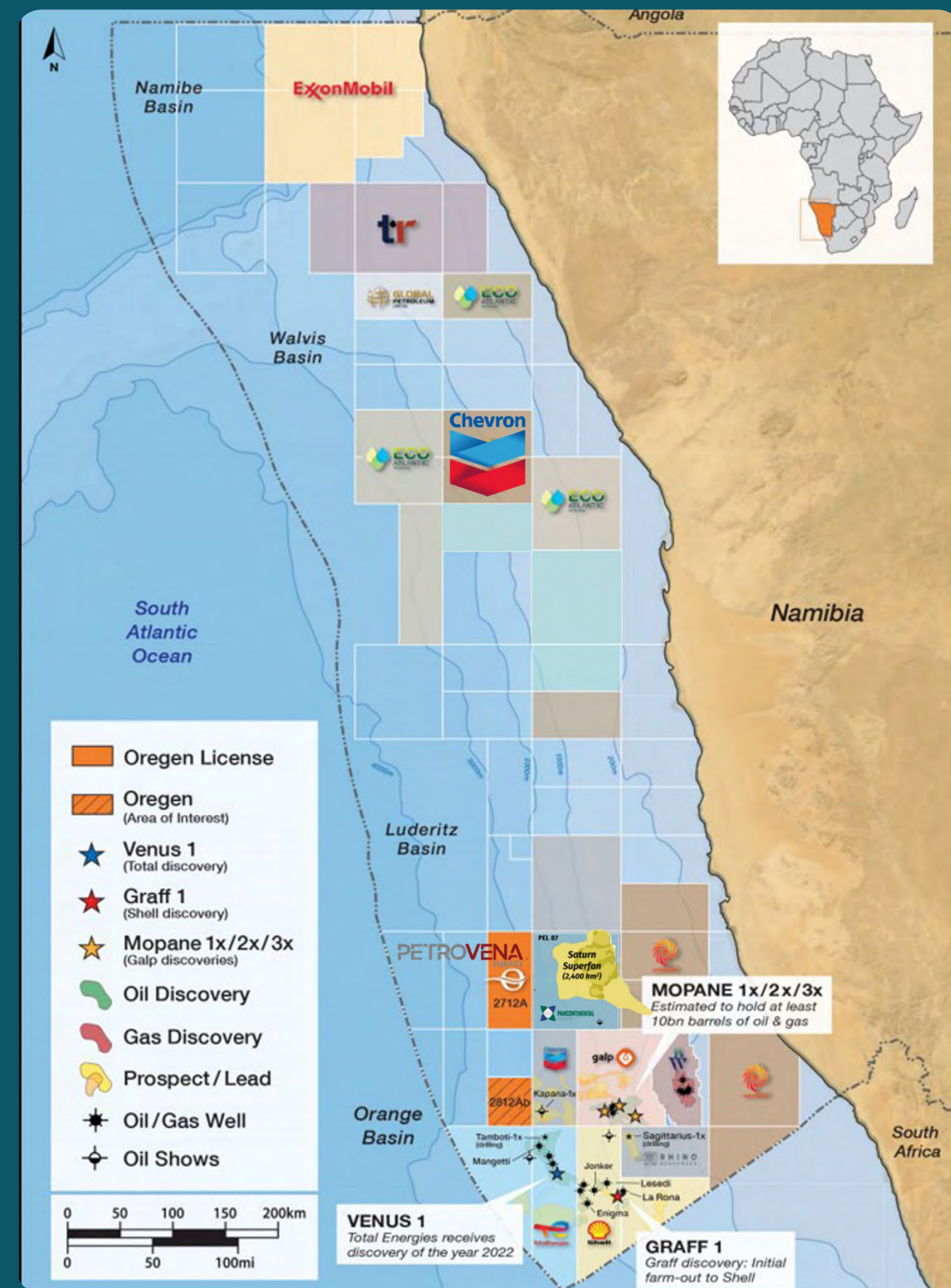
*Orogen has secured a highly strategic position through its interest in offshore Block 2712A, in close proximity to licenses held by global energy super majors including Chevron, TotalEnergies, Galp Energia and Shell.*

- *Block 2712A covers 5,484 km<sup>2</sup> of prime offshore acreage*
- *Water depths range from 2,800 to 3,900 meters, similar to recent large-scale discoveries made by Total.*
- *Orogen holds a 33.95% indirect working interest in Block 2712A through its investment in WestOil Ltd.*

## Near-Term Exploration Activities:

*WestOil is actively advancing exploration on Block 2712A with the following clear milestones planned for 2025–2026:*

- *Acquisition and detailed interpretation of existing and new 2D and 3D seismic data*
- *Completed an independent technical report (May 2025)*
- *Initiation of a **strategic farm-out process** (targeting early 2026), designed to attract major industry partners and accelerate exploration*





# Investment Highlights

## *Strategic Entry into a World-Class Oil Frontier*

- **Namibia's Orange Basin** has rapidly emerged as one of the world's top new oil plays, with recent multi-billion-barrel discoveries by **TotalEnergies, Shell, and Galp Energia**
- Oregon's **Block 2712A** is in close proximity to Chevron, TotalEnergies, Galp Energia and Shell-operated licenses in the heart of the basin

## *Early Mover Advantage with Substantial Upside*

- Controls a total 33.95% interest with operatorship in Block 2712A
- Actively negotiating new acquisitions in the basin
- One of the few junior public companies with direct exposure to Orange Basin deepwater assets

## *Technical De-Risking Underway*

- Access to extensive legacy 2D seismic + new 3D seismic acquisition in 2025
- **Independent Technical Report** (NI 51-101) on Block 2712A filed in May 2025
- Analogous geology to major discoveries like Venus (TotalEnergies) and Graff (Shell)

## *Strategic Farm-Out Plan to Accelerate Drilling*

- Farm-out process launching in **early 2026**, targeting major partners
- Structure to include **cash payments and carried interests** on seismic and initial wells

## *Clean Capital Structure & Strong Team*

- Tight share structure with only **79,582,359 shares fully diluted** Led by a proven team of capital markets, energy, and technical leaders, with **Mason Granger (ex-Sentry Investments) as CEO & Director as well as Tim O'Hanlon (ex-Tullow Oil) and Adrian Goodisman (ex-Waterous, Moelis)** as Senior Strategic Advisors





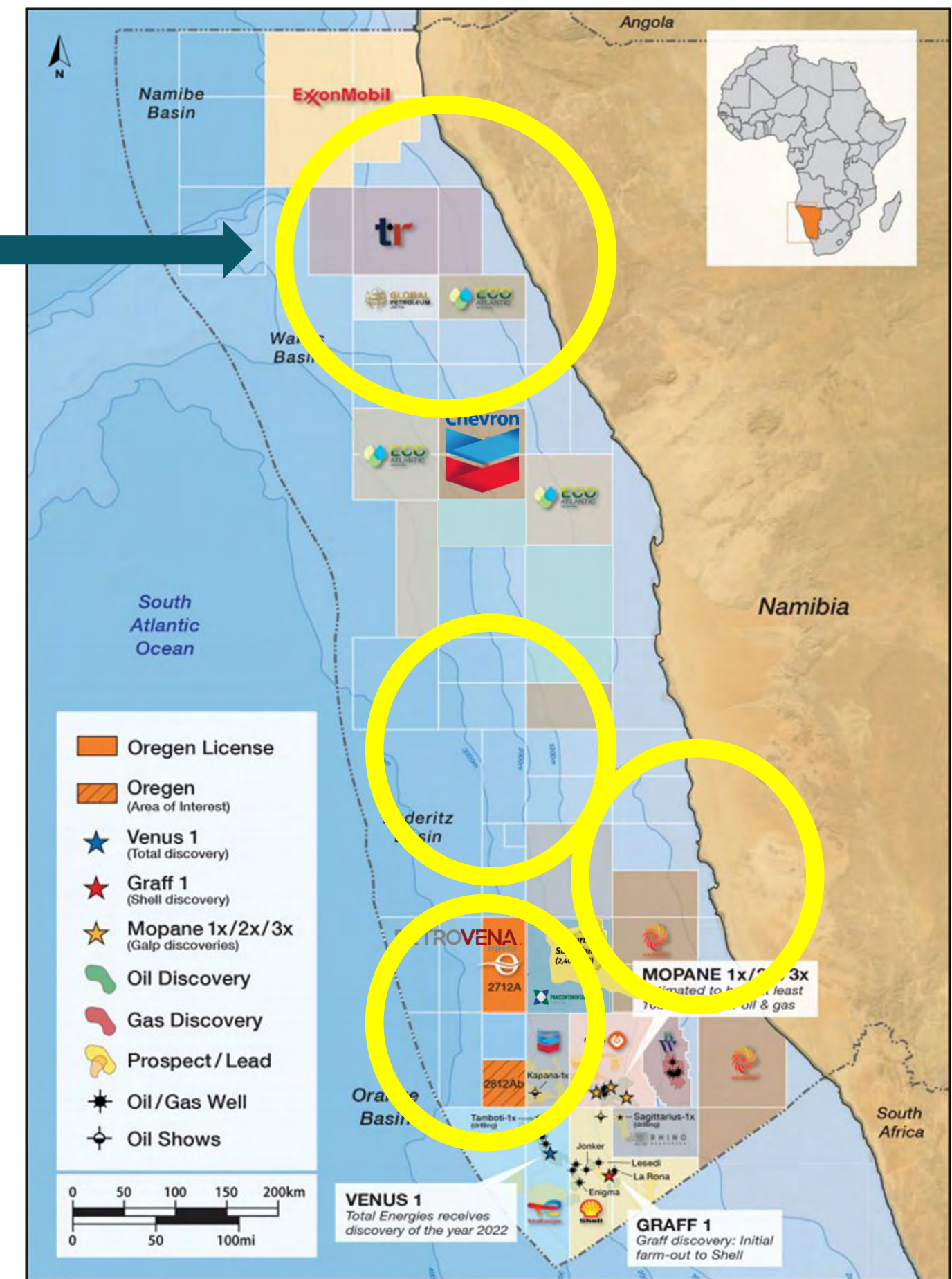




# Additional Opportunities in Namibia

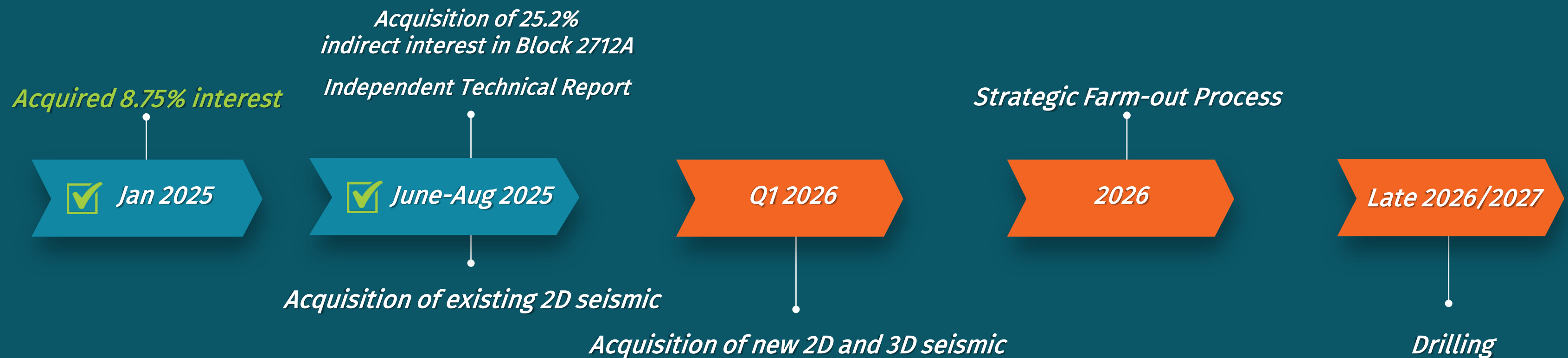
## Non-Binding LOI signed in this area

- *Oregon has signed a non-binding Letter of Intent (LOI) to acquire a 7% interest carried into production in this area*
- *The LOI outlines the terms for **Oregon involvement** in the project, subject to further negotiations and due diligence*
- ***Oregon has ongoing technical reviews** and strategic discussions focused on acquiring additional interests in the circled offshore areas*
- ***Targeting high-potential areas** within Namibia's emerging offshore basins*
- *Mission-driven approach to identifying and securing **highly prospective areas** through disciplined exploration and data-driven analysis*
- *Technical team **actively reviewing seismic, well, and basin data** to determine areas with the highest potential for significant oil discoveries*
- ***In advanced conversations** with multiple in-country parties to structure new deals and expand Oregon's offshore footprint*





# Near-Term Work Program and Key Catalysts



## Expected Developments in Orange Basin, Namibia

- 10+ wells to be drilled in Orange Basin (offshore Namibia), planned in 2025/2026 by major companies, including TotalEnergies, Shell, Galp and Rhino/Azule
- Expecting a Final Investment Decision (FID) by TotalEnergies on its Venus field 2026



# Oregon's Strategy (2025-2027)

## *Clear Roadmap for Value Creation:*

### *Independent Technical Evaluation (June 2025)*

- Oregon has completed the independent technical report evaluating geological potential, hydrocarbon prospects, and seismic interpretations

### *Acquisition & Interpretation of Seismic Data (Q2-Q4 2025)*

- **Q3 2025:** Acquisition and interpretation of existing 2D seismic data, providing immediate insight into the subsurface geology
- **Q1 2026:** Acquisition of new high-resolution infill 2D and advanced 3D seismic data over Block 2712A through partnerships with leading seismic providers

### *Strategic Farm-Out Process (2026)*

- **Mid 2026:** Opening of a comprehensive data room, engaging major global oil companies interested in the region
- Actively pursuing strategic farm-out agreements, including:
  - Cash payments
  - Carried interests for seismic and future exploration wells

### *Exploration Drilling and Development (late 2026/2027)*

- Targeting commencement of drilling activities post successful farm-out, leveraging partner funding and operational expertise
- Potential rapid advancement from exploration to appraisal drilling based on seismic and initial exploration outcomes



# Current Offshore Exploration & Development Activity in Namibia

- **TotalEnergies – PEL 91 & 56 (Orange Basin)**

Final Investment Decision (FID) for the development of the Venus discovery on Block 2912 & 2913B expected by *late 2026* – a *historic milestone* as the first-ever offshore development in Namibia's oil and gas sector

- **Pancontinental Energy – PEL 87 (Orange Basin)**

Actively seeking a *new farm-in partner* following Woodside's decision not to exercise its option on Block 2713, citing high drilling costs relative to its annual exploration budget

- **BW Energy – Kudu Gas Field – PPL 003 (Orange Basin)**

Drilling of the *Kharas-1X appraisal well* on Block 2814A planned for *Q3 2025*

- **Chevron – PEL 82 (Walvis Basin)**

Preparing to *commence exploration drilling as early as 2026* on Block 2112B & 2212A

- **Chevron – PEL 90 (Orange Basin)**

Chevron plans to drill up to 10 wells, awaiting further announcement

- **Galp – PEL 83 (Orange Basin)**

Ongoing discussions regarding a potential *farm-in partnership* to advance development of the *Mopane Discovery on Block 2813A*, arguably Namibia's most high-profile offshore find to date

- **Tower Resources – PEL 96 (Walvis Basin)**

Conducting *oil seep analysis* and a *review of volumetric data*, having identified the presence of *multi-billion-barrel oil structures across Blocks 1910A, 1911 & 1912B*; Tower Resources farmout pending Government approval

- **Global Petroleum – PEL 94 (Walvis Basin)**

License renewed to September 2025; plans to *acquire and interpret 2,000 km<sup>2</sup> of 3D seismic* over Block 2011A and drill *one exploration well*




- **Rhino Resources/Azule Energy – PEL 85 (Orange Basin)**

Capricornus-1X tested 11,000 bbl/day of 37 °API light oil from 38 m net pay; Volans-1X follow-up well planned for late July–August 2025 targeting fast-track development



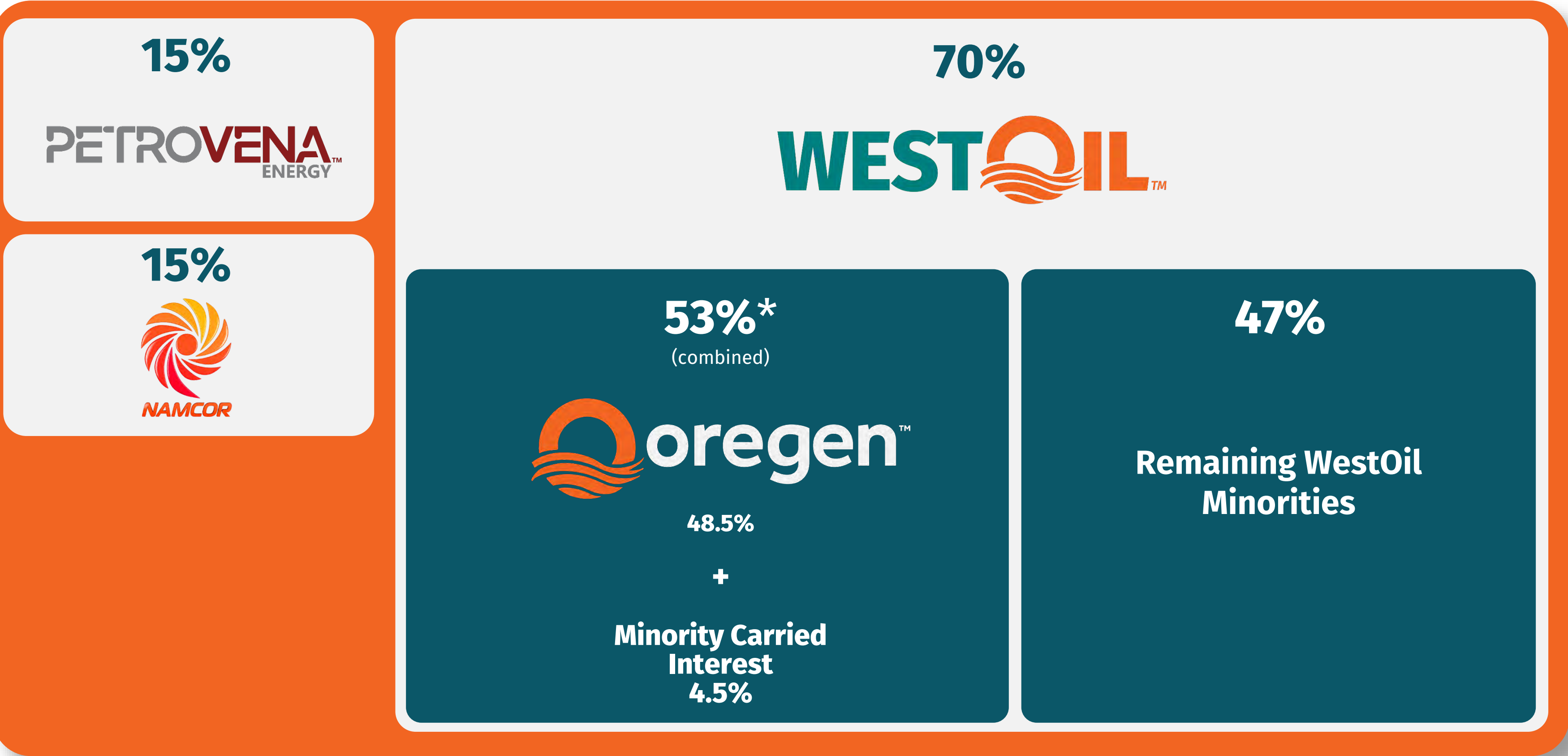


# Undervalued vs Peers in Orange Basin

Company	Namibian Project History	Project Similarities	Market Cap (as of July 22, 2025)
	<ul style="list-style-type: none"><li>Jan 2025, Oregon acquired NamLith Resources Corp., securing an indirect 8.75% working interest in Block 2712A located in the Orange Basin, offshore Namibia</li><li>July 2025 Oregon acquired Oranam Energy Ltd, bringing an additional 36% of WestOil Ltd, and an additional 25.2% 2712A indirect ownership to Oregon</li><li>Now owns 33.95% of Block 2712A (48.5% of WestOil)</li></ul>	<ul style="list-style-type: none"><li>Block 2712A situated in close proximity to licenses operated by major energy companies, including Galp and Shell, indicating a high-potential area</li><li>In the early stages of exploration, focusing on seismic data acquisition and analysis to identify drilling targets</li><li>Concentrating its efforts on offshore Namibian assets, similar to Sintana and Pancontinental</li><li>A farm-out will secure cash and a carried interest, creating near-term value and reducing capital risk</li></ul>	CAD \$16M
	<ul style="list-style-type: none"><li>Holds an indirect 4.9% stake in PEL 83, covering Blocks 2813A and 2814B in Namibia's Orange Basin</li><li>Operated by a subsidiary of Galp Energia, with ongoing exploration campaigns yielding significant discoveries</li></ul>	<ul style="list-style-type: none"><li>PEL 83 located where recent significant light oil discoveries have been made</li><li>Focused on offshore exploration in Namibia's Orange Basin</li><li>Engages in partnerships with major operators to leverage expertise and resources</li></ul>	CAD \$222M
	<ul style="list-style-type: none"><li>Holds a 75% working interest and operatorship in PEL 87, encompassing 10,970 km<sup>2</sup> in Namibia's Orange Basin</li><li>Mar 2025 announced significant prospective resources in PEL 87</li></ul>	<ul style="list-style-type: none"><li>PEL 87 situated on-trend with recent giant discoveries by Galp Energia, TotalEnergies, and Shell, indicating high exploration potential</li><li>Shares offshore focus in Namibia's Orange Basin with Oregon and Sintana</li><li>PEL 87's substantial size offers extensive exploration opportunities</li></ul>	AUD \$106M



# Ownership Structure for 2712A License



\* Pursuant to a cooperation agreement between Oregan and minority PrivateCo



# Management Team & Board of Directors



**Mason Granger**  
*Chief Executive Officer & Director*

Mason brings a lengthy and distinguished career in the energy sector with over 20 years of capital markets experience including portfolio management of both public and private oil and gas assets. He is demonstrated top performer as a five-time winner of the Brendan Wood International TopGun Investment Mind as well as a Canadian Lipper Fund Award and has established thought leadership in both oil and gas as well as ESG, sustainability and energy transition. His diverse career experience has spanned process engineering in oil and gas and power generation to portfolio management and equity research.



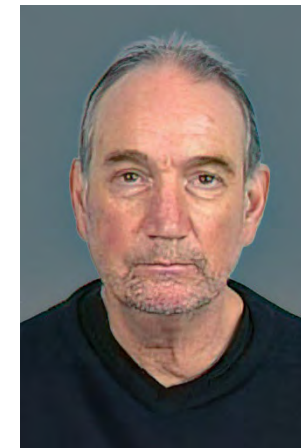
**Stuart Munro**  
*Vice President of Exploration*

Stuart Munro is a true pioneer in the Namibian Orange Basin, having played a pivotal role in the region's exploration history. As the visionary behind what is now Shell's prolific block and the subsequent game-changing Graff discovery, Munro has proven himself as a trailblazer in hydrocarbon exploration. With over 50 years of expertise and a remarkable track record of success in over 90 basins worldwide, including 18 years across Africa and 15 years in Venezuela, Munro's accomplishments speak for themselves.



**Talenda Muhle**  
*Chief Financial Officer*

Tatenda Muhle is a senior financial executive and Chartered Accountant who brings broad international experience to Oregon Energy Corp. as Chief Financial Officer. He began his professional training in Africa and has since built a strong career across senior finance, accounting, and advisory roles with both public and private companies. Tatenda's expertise spans corporate finance, financial reporting, governance, treasury, and strategic planning. His disciplined, capital-markets-oriented approach and operational finance background will support Oregon's growth strategy and offshore exploration activities as the company advances its ambitions in Namibia.



**Christopher Pitman**  
*Director*

Chris Pitman brings deep technical evaluation and operational experience in the exploration and energy sector with over four decades of hands-on experience having been the CEO of three private and public companies with assets in Africa. Chris has worked with PGS on multi-client 2D/3D seismic campaigns and provides seasoned perspective on license evaluation, seismic interpretation, reservoir modelling, and the emerging frontier geology. He is a chartered as a Fellow of the Geological Society (FGS) and he is a qualified person (QP) and competent person (CP) under both current mining and petroleum guidelines, reinforcing his credibility in technical disclosures.



**Michael Humphries**  
*Director*

Michael is a senior energy and investment banking professional with over 35 years of international experience. He began at Britoil PLC and held key roles at Samuel Montagu & Co., PFC Energy, and N M Rothschild & Sons, focusing on cross-border M&A and advisory work. In 2008, he founded Redcliff Energy Advisors to serve energy companies and investment funds in sub-Saharan Africa. From 2014 to 2018, he led the Oil & Gas Advisory team at Rand Merchant Bank before re-establishing Redcliff, now focused on strategic and financial solutions for energy firms, particularly in Nigeria.



# Strategic Advisory Board



**Tim O'Hanlon**  
Senior Strategic Advisor

*"I am delighted to step into this exciting role as a Senior Advisor to Oregon and look forward to leveraging my expertise in the oil and gas industry, particularly in Africa, and assisting the Company on its prominent exploration opportunities in the Orange Basin, one of the most active oil exploration regions in the world with some of the highest exploration drilling success rates in recent times."*

- Holds a Civil Engineering degree from University College Dublin and postgraduate studies in Reservoir Engineering from Imperial College London
- Began his oil industry career with Schlumberger
- Founding member of Irish startup Tullow Oil in the mid-1980s, focusing on African projects initially considered non-commercial by major companies
- Led early Tullow operations in Senegal, balancing fieldwork with strategic leadership
- Served as Vice President for Africa, playing a key role in Tullow's rapid expansion across the continent
- Instrumental in major acquisitions and pioneering exploration in remote African basins



**Adrian Goodisman**  
Senior Strategic Advisor

*"I'm excited to join Oregon at such a pivotal and transformative time in the company's growth. The opportunity in Namibia's Orange Basin is genuinely world-class and uniquely positioned, and I look forward to contributing my extensive experience in global energy development and strategic transactions to help accelerate and advance Oregon's ambitious vision."*

- Over 30 years of global experience in investment banking, strategic consulting, and engineering operations in upstream oil and gas
- Originated and executed transactions totaling over US\$20 billion in M&A and A&D across North America and internationally
- Extensive expertise in cross-border dealmaking
- Currently Managing Partner at AGA Ventures LLC
- Previously held senior roles at Moelis & Co., Scotiabank, and Waterous & Co.
- Early career technical experience at Phillips Petroleum (now ConocoPhillips)
- MSc in Petroleum Engineering from the University of Texas and BSc (Hons) in Mathematics from the University of Salford
- Active member of multiple advisory boards and industry organizations, including leadership roles with the Society of Petroleum Engineers





# Oregon Share Structure

## CSE: ORNG

Share Structure as of Aug 13, 2025

<i>Issued and Outstanding:</i>	64,612,024
<i>Options:</i>	200,000
<i>Warrants:</i>	12,370,335
<i>RSUs:</i>	2,400,000

***Fully Diluted: 79,582,359***

Management & Insider Ownership: 10.3%





CSE: ORNG | FSE: A1S0

[oregen.com](https://oregen.com)  
[info@oregen.com](mailto:info@oregen.com)



# Appendices

A large offshore oil rig is silhouetted against a dramatic sunset sky. The rig's complex structure, including cranes and a tall derrick, is reflected in the calm water below. The sky is filled with dark, heavy clouds, with a bright orange and yellow glow from the setting sun visible behind the rig. A helicopter is perched on one of the rig's platforms.



# Pro Forma Ownership Structure for 2712A License

	Pro Forma	
	WestOil Ownership <sup>(1)</sup>	Block 2712A Interest
Oregon (Supernova)	48.5%	33.95%
Minority Carried Interest in PrivateCo	4.5%	3.15%
<b>Combined Majority and Operatorship<sup>(2)</sup></b>	<b>53.0%</b>	<b>37.1%</b>
PetroVena	0%	15.0%
NAMCOR	0%	15.0%
Remaining WestOil Minority Shareholders	47.0%	32.9%
<b>Total</b>	<b>100%</b>	<b>100%</b>

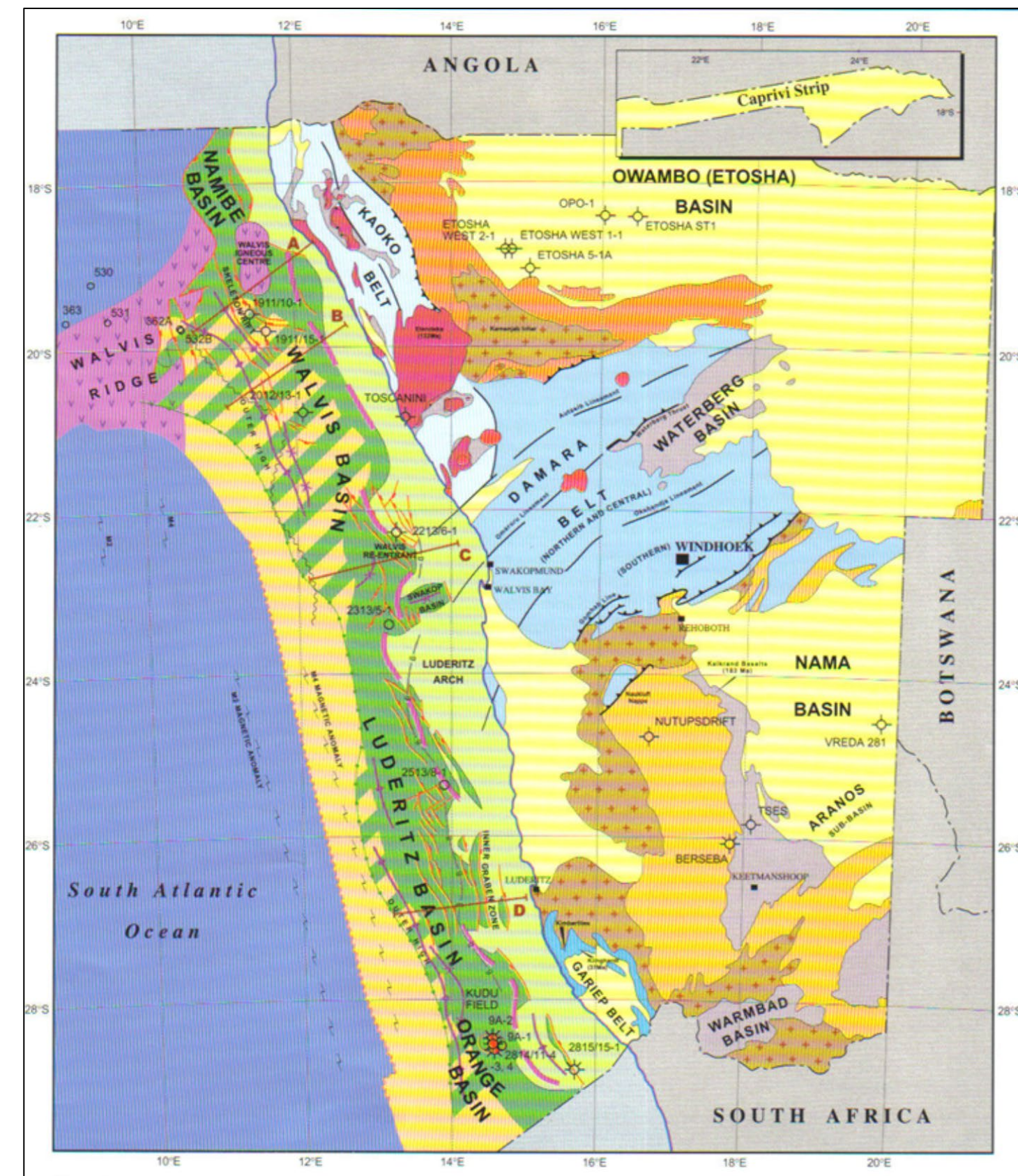
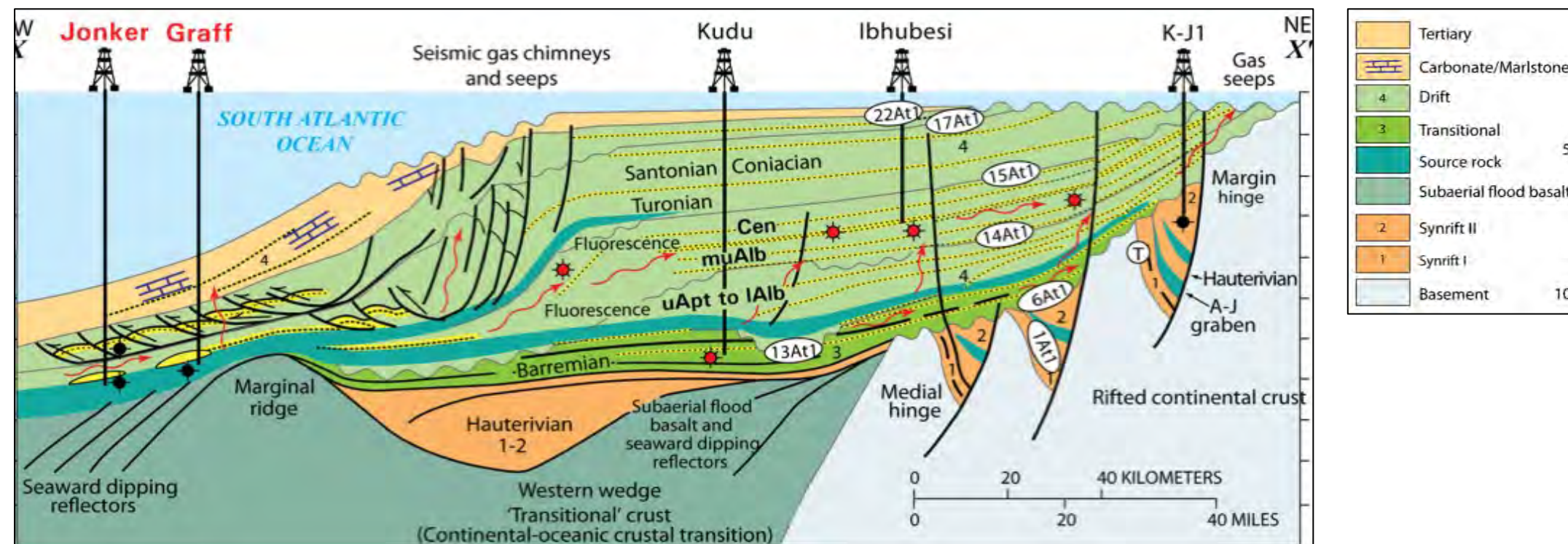
(1) WestOil controls 70% interest in Block 2712A  
(2) Pursuant to a cooperation agreement between Oregon and minority PrivateCo



# Geology Overview

*Orange Basin is one of the most active exploration areas in the world*

- Namibian offshore basins are in the south-eastern part of the South Atlantic margin and extend to ~3,000 m water depth
- Basin formed in late Jurassic to early Cretaceous during South American/African rift
- Divided into 2 sub-basins: outer high basement ridge (foldout) and seaward dipping reflectors - subaerial flood basalts
- Hydrocarbon play concepts:
  - Venus discovery is in outer sub-basin - trap is basin floor fan fairway onlapping onto outer high (outer high is responsible for controlling reservoir and source rock distribution and deposition as wells as generating trapping configurations)
  - Shell Graff-1 is in the inner sub-basin





# Basin Activity – Shell’s Multiple PEL 39 Discoveries & Successful Appraisals

*Multiple proven working petroleum systems open frontier oil play in offshore Namibia*

*Shell announced a “Significant Oil Discovery” at the Graff-1X in February 2022 in Upper Cretaceous marine sandstone, block initially farmed-out by Orogen management team in 2013*

- Reserve estimates in excess of 2 billion bbls, Shell’s largest commercial discovery in offshore west Africa since 1996
- Exceeded initial estimates of 700 MMbbls and \$2.8 Billion NPV10 at US \$50 Brent assuming 35 potential locations producing an estimated peak production of ~190 Mbbl/d
- Graff drill stem test carried out late April to early May 2023

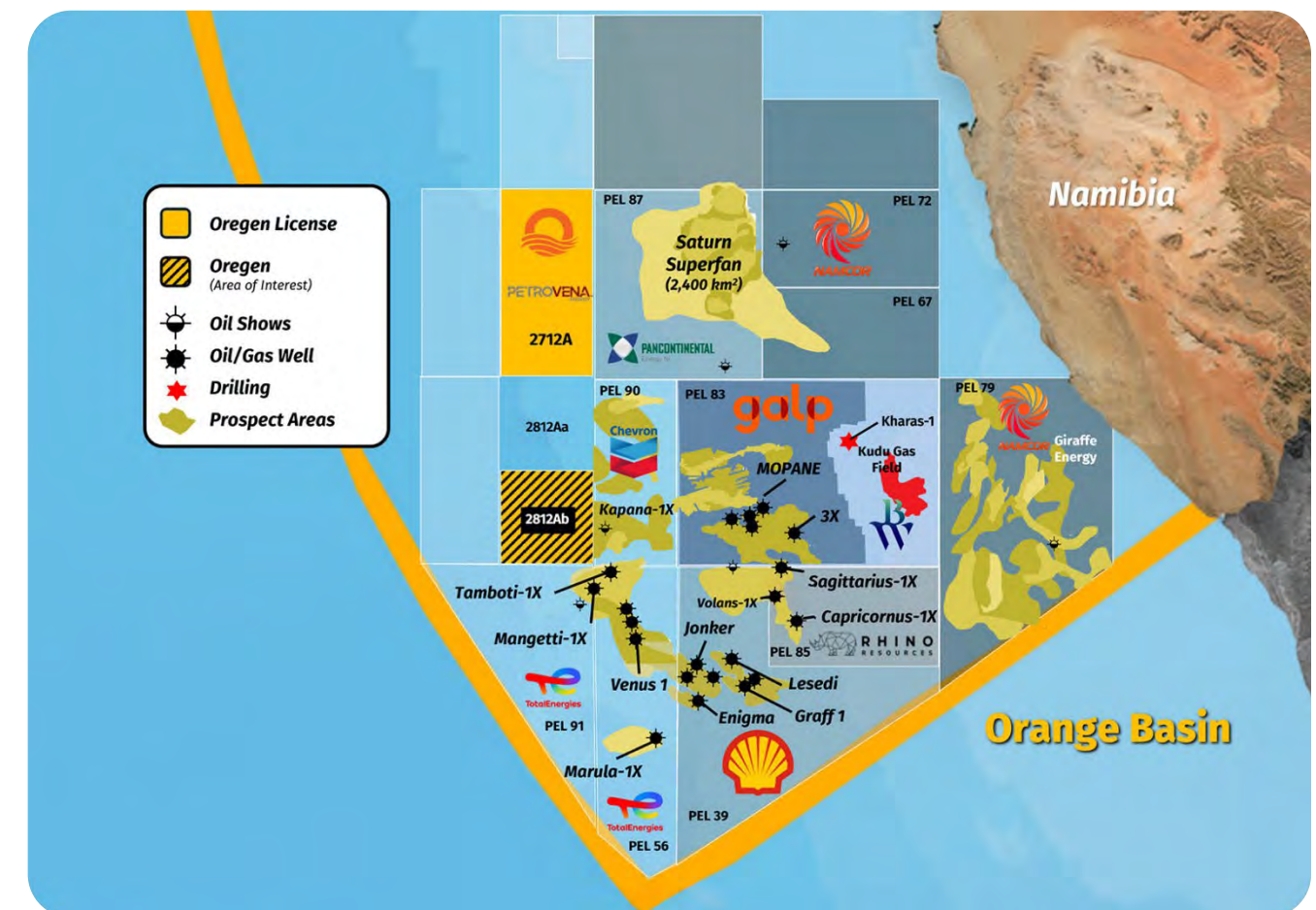
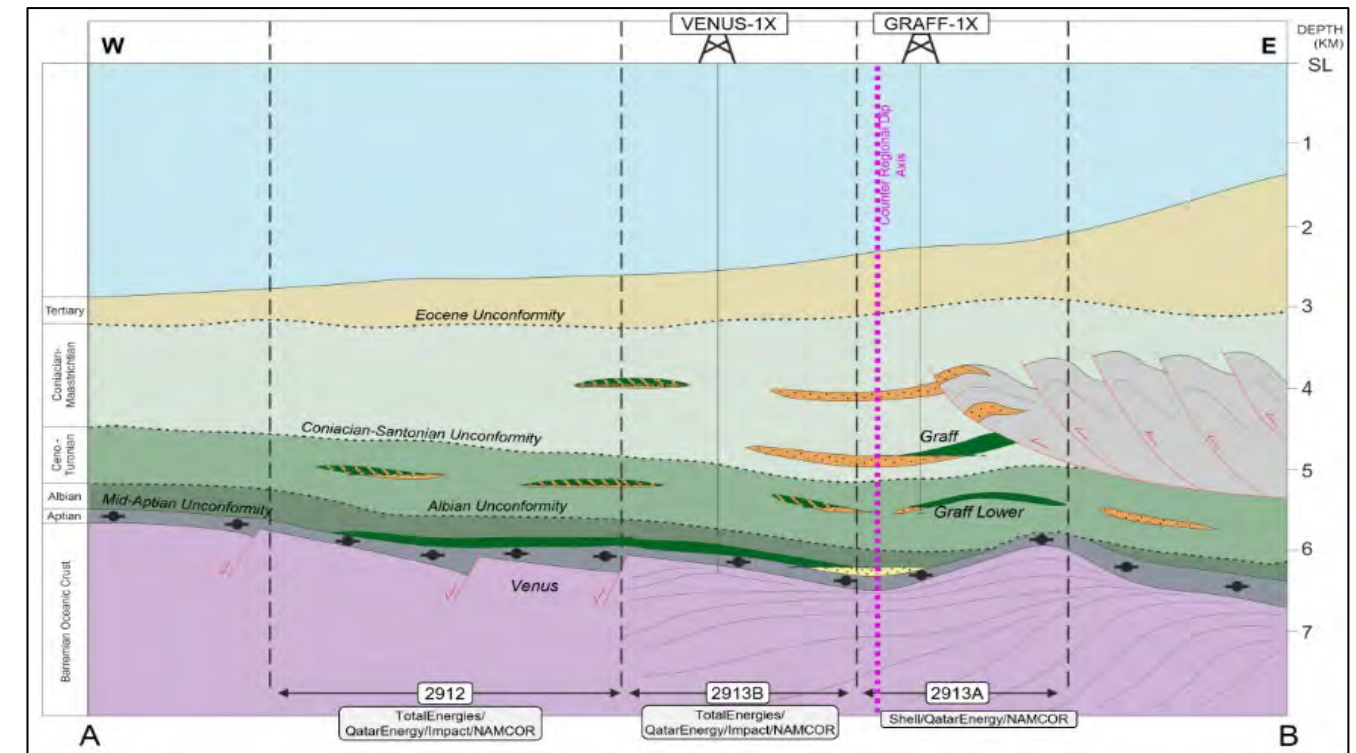
*Successfully drilled the La Rona-1X appraisal well, planned as a long-distance step-out ~8 km northeast with predrill estimates in excess of 400 Mbbl*

*In December 2022, Shell spudded the Jonker-1 exploration well ~18 km west of the Graff well*

- Discovery is significant because the well targeted the Lower Cretaceous, a different geological play than the Upper Cretaceous target at Graff-1 & La Rona-1, proving multiple petroleum systems in PEL 39
- March 2023, NAMCOR said the Jonker-1 was “a major light oil discovery that will be appraised”

*June 2023, Shell completed drilling the Lesedi-1X exploration well ~20 km northeast of the Graff and began drilling the Cullinan discovery well in the same month, directly south of Galp block*

*Initiating multi-well drilling campaign: Shell filed for license to drill as many as 10 new exploration and appraisal wells in PEL 39*





# Basin Activity – Total’s Record Breaking Discovery – PEL 56

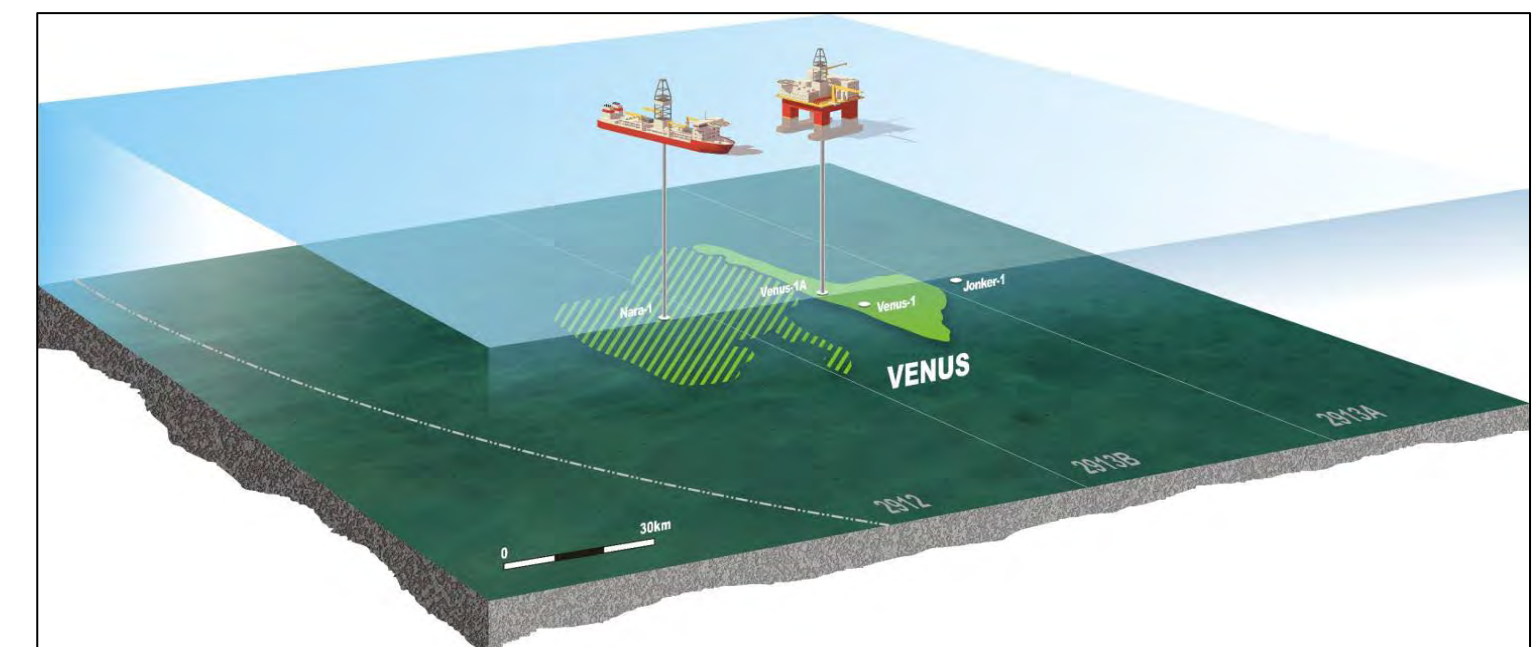
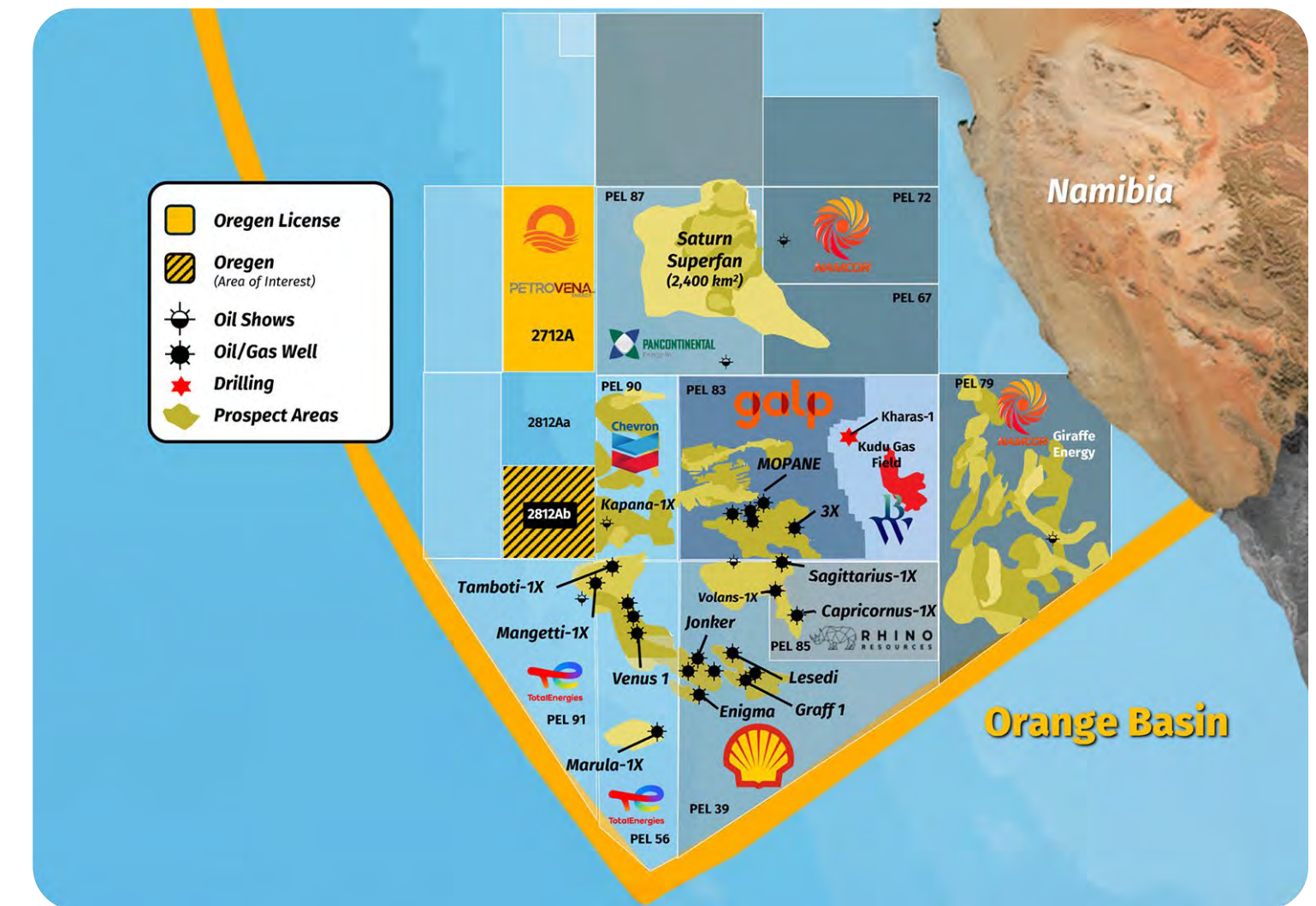
## *World-class light oil mega discovery in PEL #56 “Golden Block” 290km off coast of Namibia*

*February 2022, Total announced a “Giant light Oil and Gas Discovery” in the Venus-1X, Africa’s largest ever Sub-Sahara oil discovery*

- 3+ billion barrels recoverable conservative post-drill estimates exceed pre-drill estimates by as much as 100%
- Drilled to total depth of ~6,300 m in ~3,000 m water; encountered 84 m of net oil pay in good quality Lower Cretaceous reservoir
- Phase 1 development of ~920 MMbbls; \$3.5 Billion NPV10 at US \$50 Brent assuming 35 development locations producing an estimated peak production of ~250 Mbbl/d

*Total has initiated a multi-well drilling program, spending half of its 2023 global exploration budget in PEL 56 (targeting up to four wells) appraising the Venus discovery and testing the field’s westerly extension in the Nara prospect in Block 2912*

- Mobilizing two drilling units: Tungsten Explorer and Deepsea Mira
- Venus-1A spud in February 2023 by Tungsten Explorer drillship followed by a drill stem test using Deepsea Mira
- Drilling the Nara-1X by Tungsten Explorer on Block 2912 testing the western extent of the Venus discovery; contingent Nara-1A appraisal well to be drilled and flow tested after successful Nara-1X
- Campaign success could underpin a fast-tracked phase one development scenario



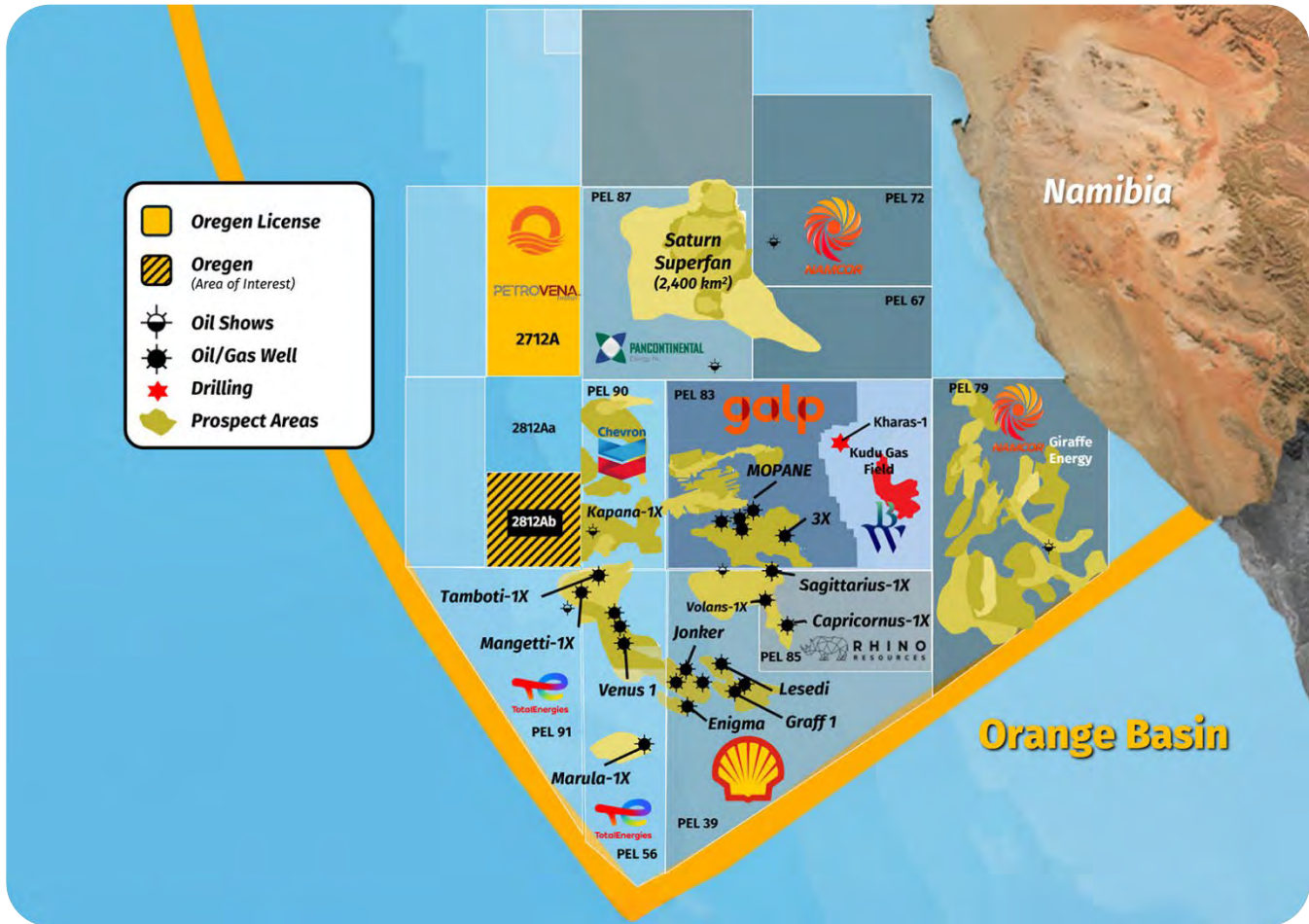


# Basin Activity – Shell’s Multiple PEL 39 Discoveries & Successful Appraisals

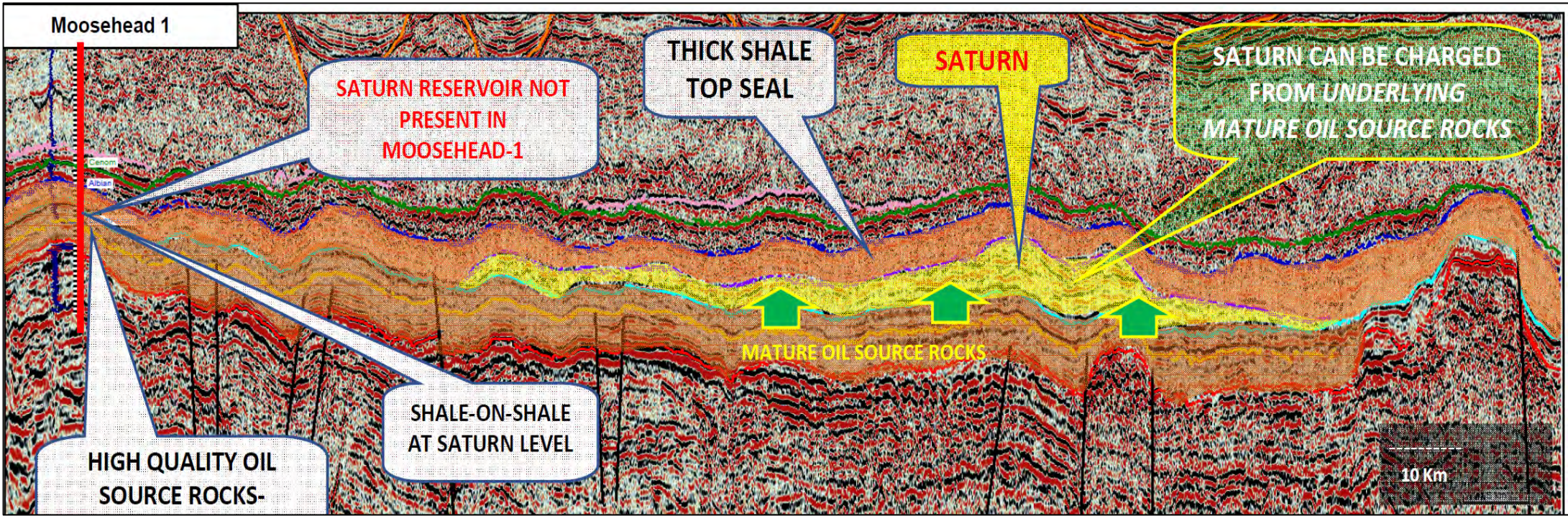
*Adjacent to Oregon block with contiguous geology and on trend to adjacent discoveries*

*Saturn Superfan is a giant turbidite complex similar to Total’s Venus oil discovery directly south*

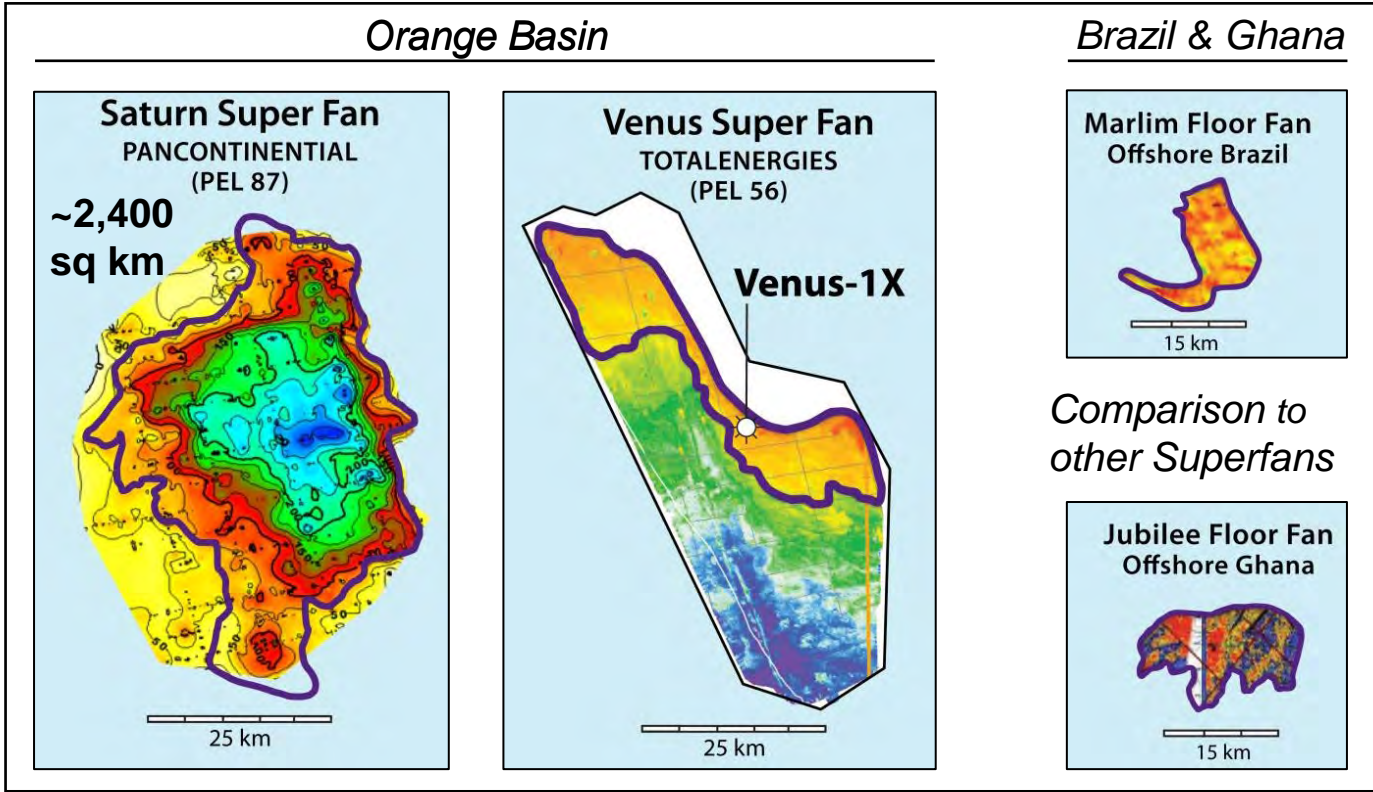
- Saturn reservoir is not present in the HRT 2013 Moosehead-1 well drilled in the southeast section of the block; well lacked reservoir porosity but confirmed high quality source rock
- At least seven leads identified across complex
- Independently assessed multi-billion-barrel potential



South to North Cross Section



Source: Company disclosures, NAMCOR GIS





# Basin Activity – Galp Energia Mopane Light Oil Discovery

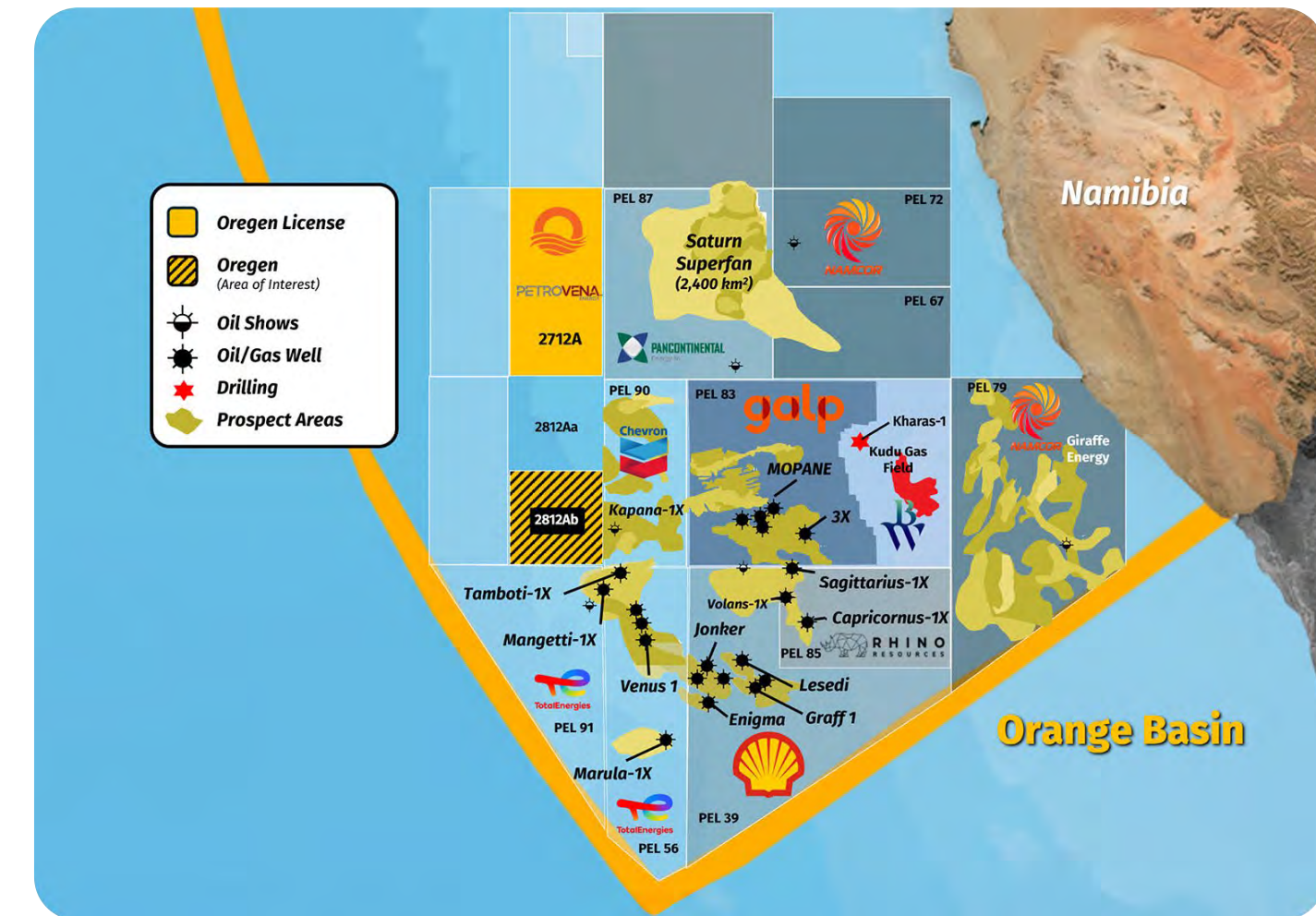
*Mopane– 1X and Mopane – 2X estimated 10 billion barrels of oil equivalent*

## Galp Energia – PEL 83

- Block is located directly north of PEL 39 where Shell made its Graff-1 light oil discovery, and directly to the west of the Kudu Gas Field in water depths ranging 250 to 2,550 m
- Galp announced the Mopane-1X encountered light oil at two levels, AVO-1 and a deeper target at AVO-2
- Mopane-2X (offset 8kms) successfully appraised the AVO-1 discovery, drilled a third AVO-3 anomaly and a deeper target
- Hercules rig performed a production test at Mopane-1X which reached the maximum allowed limit of 14,000 BOPD
- Galp has acquired 4,000 km<sup>2</sup> of 3D seismic and will drill 10 additional wells
- 4 well appraisal campaign at the Mopane Complex to begin in Q4-24. With current success they are planning to continue into their 5<sup>th</sup> well
- More than 12 oil companies, including Exxon, Shell and Brazil's national oil company, have expressed interest in buying a 40% stake in Galp Energia's (**GALP.LS**), major oil discovery offshore Namibia, sources close to the sale process said

*“In the Mopane complex alone, and before drilling additional exploration and appraisal wells, hydrocarbon in-place estimates are 10 billion barrels of oil equivalent, or higher.”*  
Galp Energia 04/21/24

Source: Galp Energia – Jan/April 2024 News Releases, Pancontinental – Jan 19, 2024 NR



Lesedi-1X

## Hercules Semi-Submersible

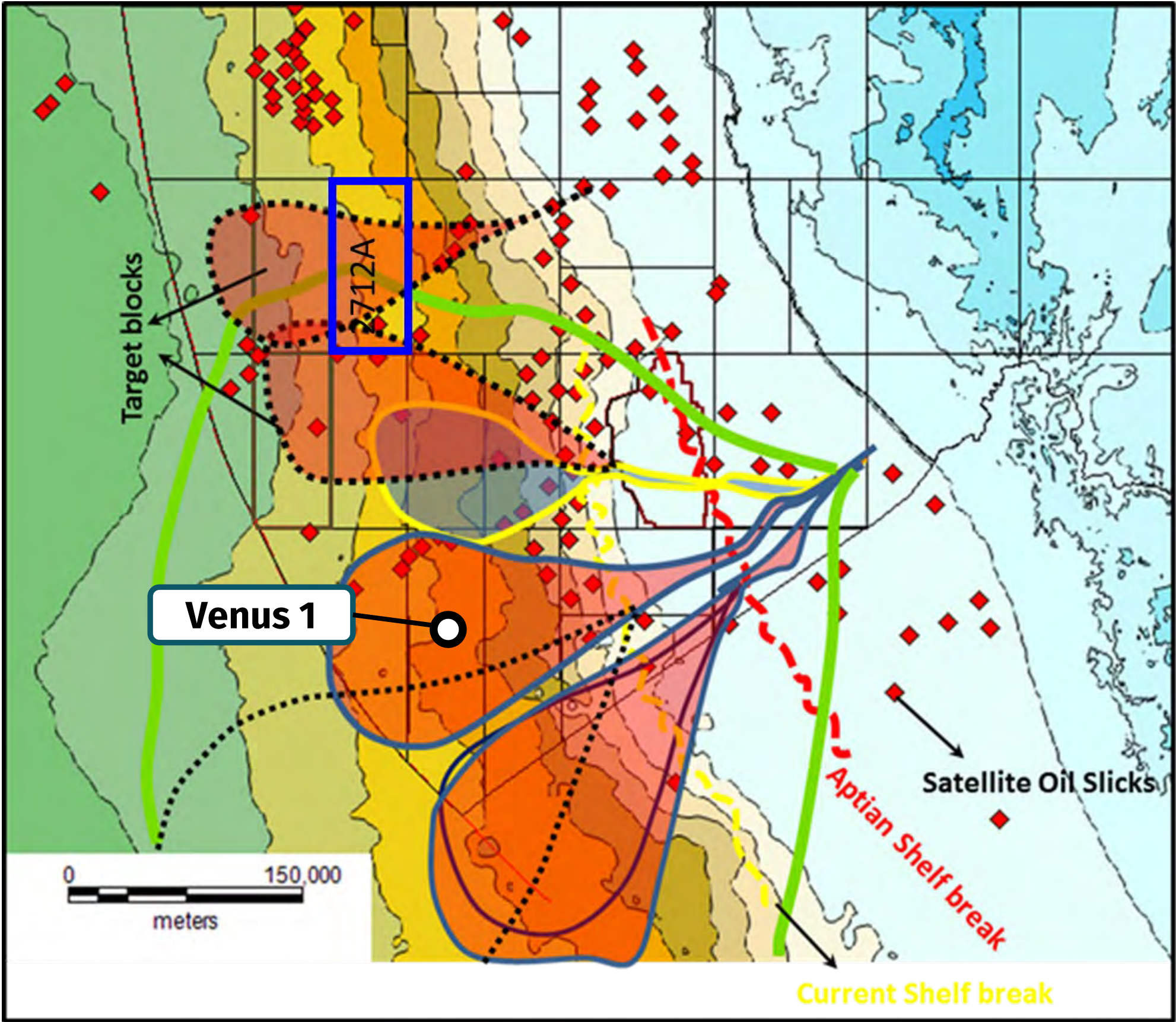




# 2D Seismic Images: Reservoirs

## Model of Deep Water Turbidite Systems

Similar systems were drilled in Venus-1 and Graff-1. Both wells confirmed the presence of reservoirs and light oil charge.





# 2D Seismic Currently Over 2712A

*SEISMIC IMAGES COVERAGE FOR THE ANALYSIS.*

*IMAGES WERE OBTAINED FROM DATA ROOM AT NAMCOR.*

